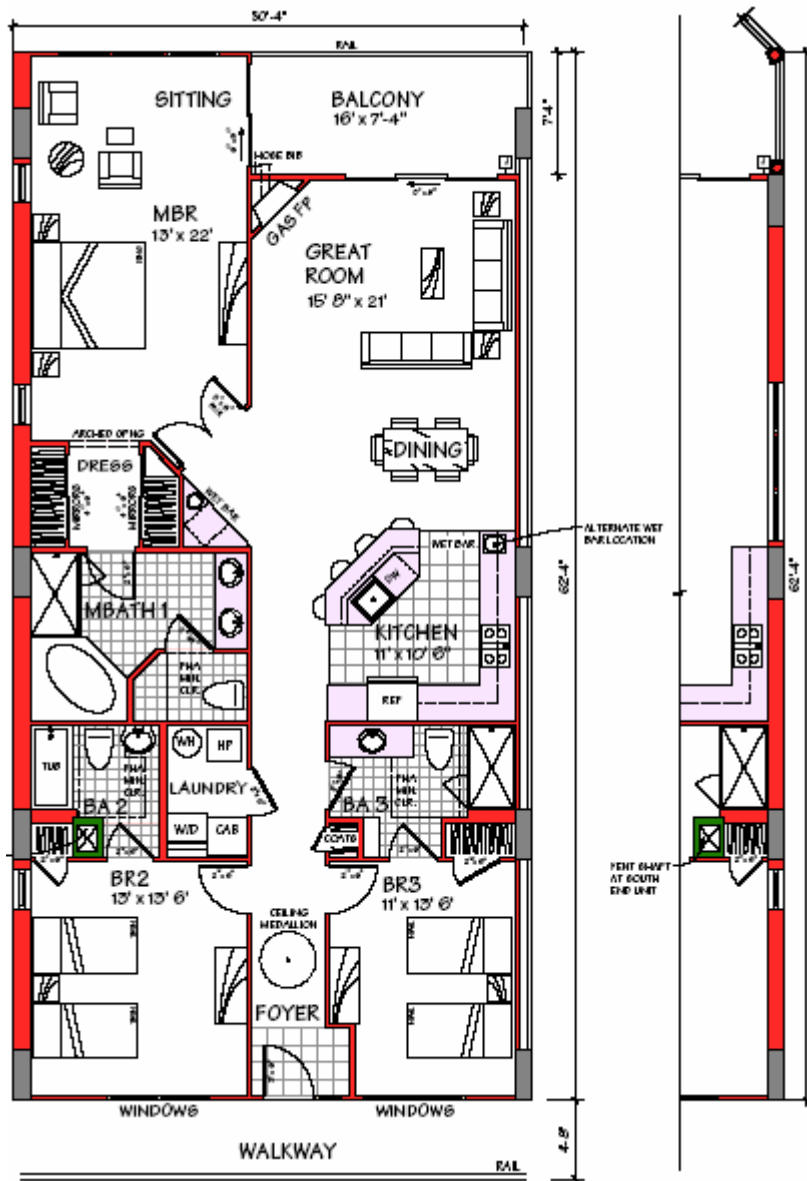
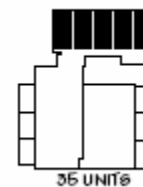
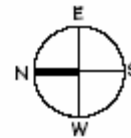


Belmont Towers

Where the Past Is Now the Future in the Heart of Ocean City



NOTE: BALCONIES ON LEVEL 2 ARE LARGER (SEE TABULATION)



3BR End Unit

UNIT 1 - NORTH END UNIT
 (SOUTH END UNIT SIMILAR)
 AREA: 1772 SQ FT
 BALCONY AREA: 119 SQ FT

UNIT 1 - SOUTH END WALL
 AREA: 1772 SQ FT
 BALCONY AREA: 176 SQ FT

BOARDWALK TOWER CONDOMINIUM



DORCHESTER ST. & THE ATLANTIC OCEAN
 PHONE: 888.9.BELMONT OR 410.524.6400
 FAX: 410.524.1180 EMAIL: KEVIN@MARKF.COM